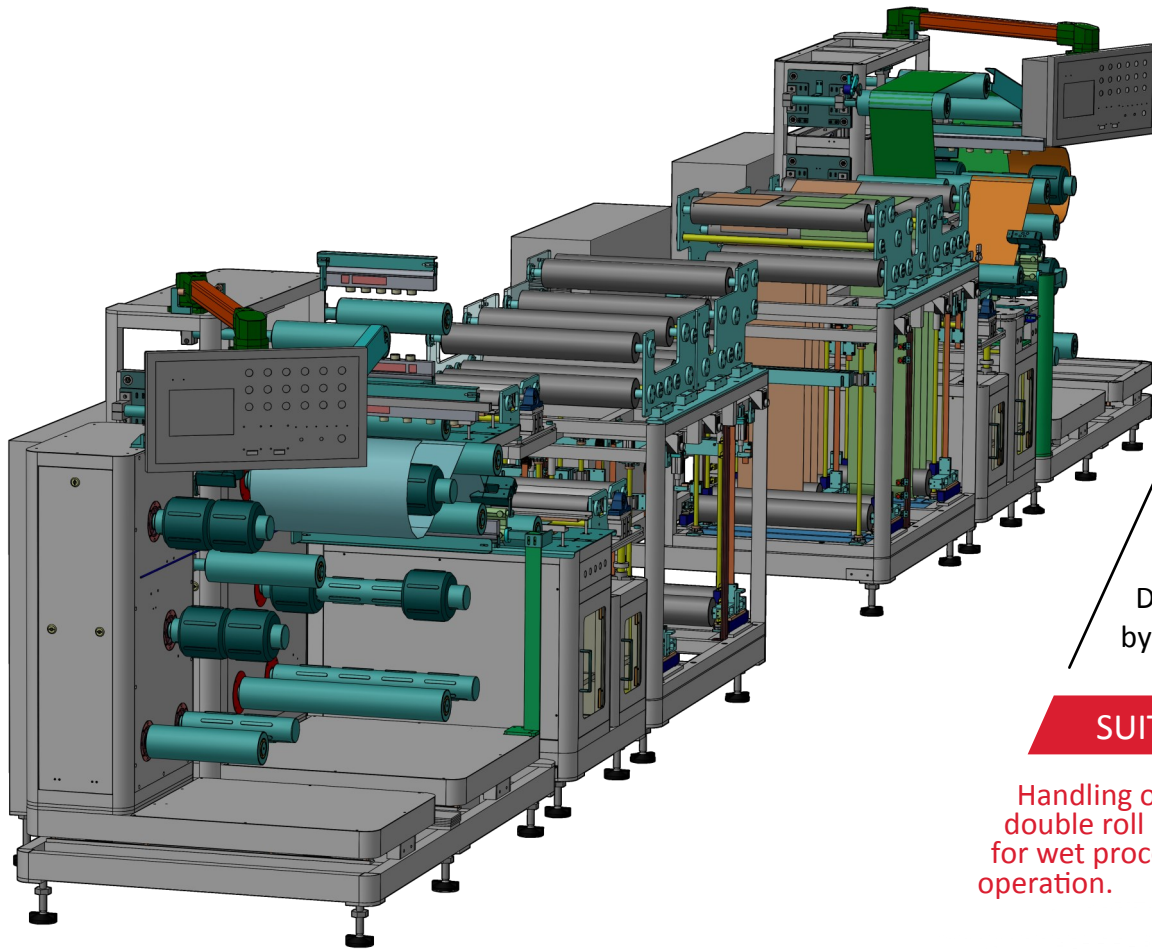


# SLF/SUF-233

## Roll-to-Roll handling system



FPC  
Automation  
Developed  
by Symtek

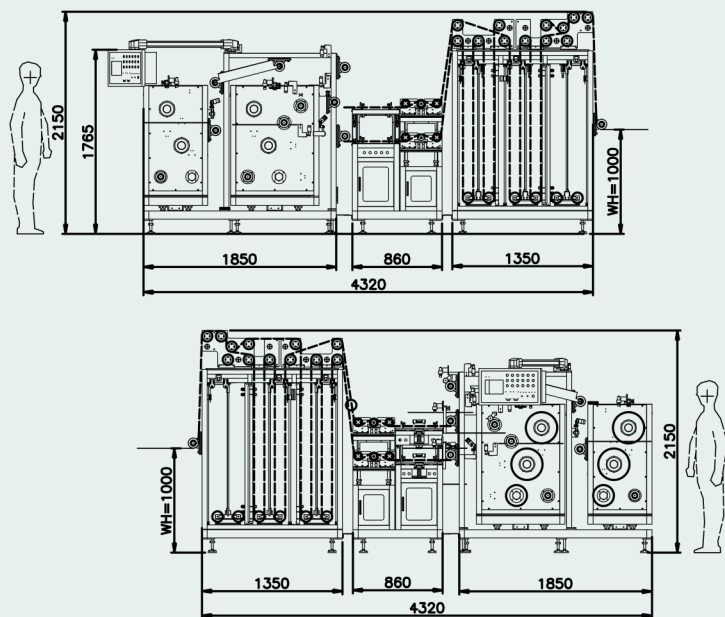
**SUITABLE FOR**

Handling of single (250mm) or double roll (500mm) material for wet process in continuous operation.

## DESCRIPTION

- 1 The board elements are reeled into the machine and pulled sequentially through the rollers.
- 2 After the board is processed it is wound onto the receiving rollers of the unloading system.
- 3 The system can automatically detach the protection foil before processing and laminate with a new one afterwards.
- 4 The machine is be equipped with a buffer system to connect foils for continous production.
- 5 The connection of foils needs to be done manually on an integrated connection table.

**SAA**  
Symtek Automation Asia



SUF-233  
unloader detail

TYPE	Loader	Unloader
DIMENSIONS (LxWXH)	2985x1550x1700 mm	2630x1530x1700 mm
WORKING HEIGHT	1000 mm ±50mm	
MAX. WIDTH	500 mm	
MIN.WIDTH	250 mm	
PANEL THICKNESS	1/4 ~ 1/2 oz.	
TENSION	2 ~ 5 KgF mechanically— 0.5 ~8 KgF electronically	
E.P.C.		±0.5 mm
THROUGHPUT	1~6 m/min	
LINK BUFFER	2.8m	optional
POWER	1PH 220V 50/60Hz 6KW Other power configurations are available on demand.	
AIR	0.6 MPa 20 NL/min	